

"I looked after you in the desert..." Hosea 13:5

# ¡Adelante! Temple Beth-El Newsletter

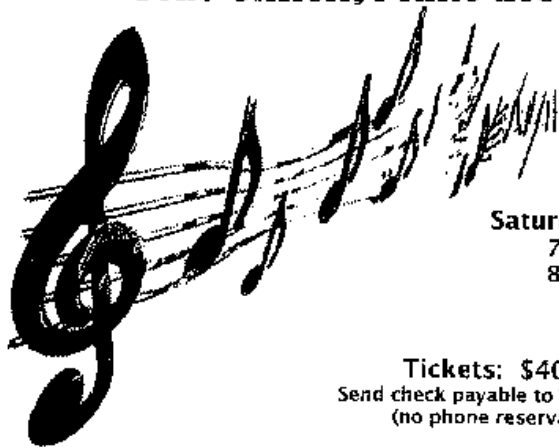
JUNE/JULY 2009— SIVAN/TAMMUZ/AV 5769



Temple Beth-El

*Treat Yourself to One Enchanting Evening!*

## **Cantor's Cabaret "From Shtetl to Stage Door" with Cantor Murray Simon and Toby Simon, piano accompanist**



**Saturday, June 20<sup>th</sup>**  
7:30 P.M. Wine & Cheese  
8:15 P.M. Performance

**Tickets: \$40 per person**  
Send check payable to TBE to the Temple by June 16<sup>th</sup>  
(no phone reservations accepted)

### **Cantor Simon's TBE Schedule**

- Saturday, June 20<sup>th</sup>**  
 10:15 A.M. Cantor Simon will co-officiate with Rabbi Citrin at Services  
 7:30 P.M. Cantor's Cabaret
- Sunday, June 21<sup>st</sup>**  
 9:30 A.M. Breakfast \$8.00 per person  
 Send your check to TBE by June 16<sup>th</sup>  
 10:00 A.M. Cantor Simon's video presentation "Great Cantors of the Golden Age"

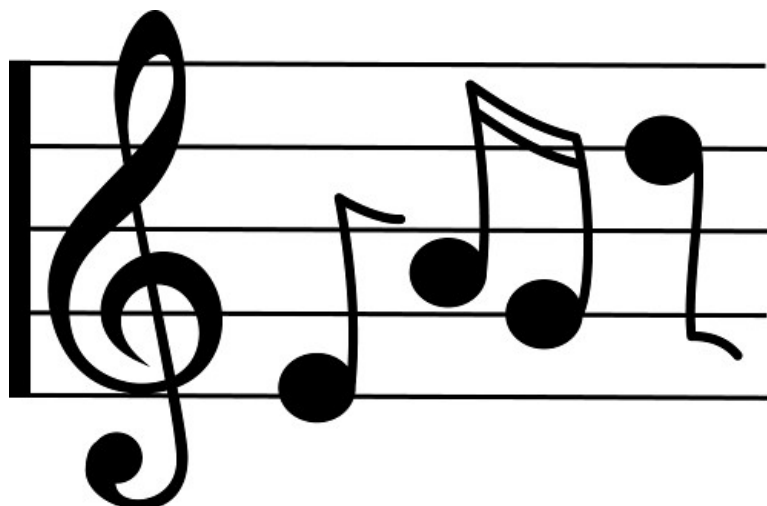
Arranged with the hospitality of Sisterhood, Mensch Club and the Adult Academy

### **Temple Beth-El Mission Statement**

*Temple Beth-El is dedicated to creating and maintaining an intimate and involved Jewish community. We strive to be a place where spiritual growth, tradition, and ritual provide meaning and comfort to every person who comes through our doors. Temple Beth-El encourages its members to learn, celebrate, serve, and grow together, so that each person will have the fullest opportunity to share the beauty of Jewish expression.*

### **TABLE OF CONTENTS**

Contacting The Temple	2
Donations	11
Hadassah	10
In Memoriam	13
President's Message	3
Rabbi's Message	2
Religious School	9
Shabbat Schedule	14
Sisterhood	6
Social Action	10
Training Wheels	10
Upcoming Events	15
Youth Groups	7



**Contacting  
Temple Beth-El**

**Mailing Address:**

3380 Sonoma Springs Ave.,  
Las Cruces NM 88011

**Fax:** 521-8111

**Rabbi:**

Paul J. Citrin  
rabbi@tbelc.org  
575-524-3380

**President:**

Paul Feil  
42feil@gmail.com,  
messages 522-2777

**Vice-President:**

Marianne Panzini-Rosenthal

**Treasurer:**

Allen Palanker

**Board of Trustees at Large:**

Mark Steinborn, Harvey Hilbert, Arthur Berkson, Bill Stein, Jay Spetalnik. Michael Mandel, Corry McKissack

**Temple Administrator:**

Stefani Singer  
admin@tbelc.org

**Sisterhood Rep:**

Buzzie Lieberman

**Mensch Club**

Ford Parkes-Perret  
[fordparkesperret@comcast.net](mailto:fordparkesperret@comcast.net)  
373-0334

**Religious School:**

Susannah Skyer Gupta  
suzskyer@gmail.com  
522-1070

**Sisterhood:**

Terri Sugarman

**Hadassah:**

Diane Bass 522-3833

**Worship Committee:**

Stuart Kelter

**Beth-El Temple Youth  
(BETY) :**

Stefani Singer 312-3915

**Rabbi Emeritus:**

Gerald M. Kane  
jercyrl@aol.com  
532-8888

## *A Message from the Rabbi*

Dear Friends,

Once we have met our basic life needs, what truly fulfills us is having good friends, enjoying music and delving into our cultural heritage. This is exactly what we will be doing on the evening of June 20<sup>th</sup>, when Cantor Murray Simon, accompanied by his wife, Toby, presents “From Shtetl To Stage Door.”

Cantor Simon’s program encompasses Yiddish songs from Eastern Europe, Second Avenue tunes, Irving Berlin hits and Broadway selections. His magnificent tenor voice and his showmanship are magical. An evening with Cantor Simon is uplifting and fun. It reminds us of our fabulous and portable musical heritage which has contributed so greatly to the American musical scene. Treat yourself to an enjoyable evening not to be missed!

At the same time, your participation on June 20<sup>th</sup> provides a substantial financial boost to the Congregational budget. In light of our fiscal challenges which were discussed at the annual meeting on May 19<sup>th</sup>, your support is needed by our community. So what could be better than doing a mitzvah while reaping some fabulous cultural and aesthetic benefits?



On Sunday, June 21<sup>st</sup>, Cantor Simon will present his video tape entitled “Great Cantors of the Golden Age.” We will start with breakfast at 9:30 A.M. At 10:00 A.M., we will show the video which Cantor Simon will introduce. The film is a unique collection of footage of a variety of the twentieth century’s famous cantors.

Cantor Simon is one of my dearest friends. We have known each other since 1973, when we worked together at Temple Israel of Boston. For five years, we had a mutually supportive and creative relationship. We have shared vacations and family joys and sorrows over thirty-six years. It is this precious kind of friendship that makes life beautiful. My great joy will be to introduce my friends at Temple Beth-El to my friend, Cantor Simon.

Make June 20<sup>th</sup>-21<sup>st</sup> a priority on your calendar for Jewish music and heritage with Cantor Simon. I look forward to enjoying and kvelling with you.

Shalom,

Rabbi Paul Citrin

## Cantor Murray E. Simon



**Cantor Murray E. Simon** is a native of Philadelphia, PA where he earned the degree of Bachelor of Music in Performance from Temple University. In 1980, Cantor Simon was honored by Temple University as “Alumnus of the Year” of the College of Music. He then enrolled at the Hebrew Union College - School of Sacred Music in New York City where he was certified and commissioned as a Cantor in addition to receiving the degree of Bachelor of Sacred Music cum laude.

Cantor Simon has served several prominent congregations in the New York City and Boston communities. Cantor Simon has been the Cantor at The Jewish Center, Princeton, N.J since 1996. He has been a lecturer in Jewish music and liturgy at Brandeis University, Hebrew College, Brookline, MA as well as the Academy for Jewish Religion in New York City where he currently serves on the faculty.

He was a voice student of Eleanor Steber of the Metropolitan Opera Association and he also attended the Boston Conservatory of Music where he received his Master of Music degree in voice. In June 2005, Cantor Simon was a featured tenor soloist in a concert at Lincoln Center, New York City.

He is an Honorary Fellow of the Jewish Theological Seminary. Cantor Simon is the producer of the highly-acclaimed, historic DVDs, *GREAT CANTORS OF THE GOLDEN AGE* and *GREAT CANTORS IN CINEMA* in conjunction with The National Center for Jewish Film at Brandeis University. Cantor Simon has been awarded two honorary Doctor of Music degrees – one from the Hebrew Union College - Jewish Institute of Religion and one from the Jewish Theological Seminary for his many contributions and achievements in the cantorate.

## Past President's Message

Upon reading this message for the summer edition of *Adelante* we have a new board and new officers. I would like to thank everyone in the extended Temple community for your help, support, and counsel over the last three years of my presidential office. I remain on the board helping as I may to ensure the continuation of Jewish practice in Las Cruces. Highlights of the last three years included moving into the new building at Sonoma Ranch, the retirement of Rabbi Emeritus Jerry Kane, the hiring of Rabbi Paul Citrin, and the continued education of our children and ourselves. I am not the maker of these actions but a participant. I think we all deserve applause for our efforts.

I want to especially single out the tireless efforts of Jamie Bronstein for the yeoman job of monthly *Adel*

ante production. Thanks Jaime. Thanks to all the copy contributors. If I wanted to thank all those who have helped me I'd need a recitation of the Temple membership as you have all helped me. The practical reward of TBE presidency has been you have moved me into the computer age in spite of my reluctance. GO MAC!

Challenges lie ahead to manage our finances and the expected changes to our Jewish and Las Cruces community. I am sure we are up to the task. The new board is engaged and ready to listen, guide and push us forward. THANKS! THANKS! THANKS!

Paul Feil MD



## *Beth El Temple Youth Groups and Machon Trip Update*

By Stefani Singer

It was my and Mark's pleasure to assist Rabbi Citrin with the Machon trip through Jewish New Mexico during April. We spent hours and hours driving from Las Cruces to Albuquerque, from Albuquerque to Las Vegas and from Las Vegas to Santa Fe in search of Jewish monuments, temples, cemeteries, art and food.

We were treated to a special Shabbat dinner at the downtown Albuquerque home of Rabbi Paul and Susie. We were treated to an interesting and provocative discussion with Dr. Stanley Hordes about the Crypto Jews living right here in New Mexico. The Crypto Jews are many of the descendants of the expelled Jews from the Spanish Inquisition several hundred years ago. Having forsaken their Jewish traditions and practices, over many generations, they forgot their Jewish roots and in the last century, many are re-discovering these ties and we learned that many are returning to Judaism. It was an exciting revelation to the Machon class, and stimulated discussion as we drove from place to place during our trip.



*Inside the first synagogue in New Mexico*

Another interesting stop was in Las Vegas accompanied by historian Melanie Leborwit, at the site of the very first synagogue built in Las Vegas, New Mexico. A friend of Rabbi Citrin, she is very knowledgeable about Jewish pioneer

history in New Mexico, spent all of Saturday and early Sunday with us, showing us the temple, the city of Las Vegas and the very first and most interesting Jewish cemetery and told us many stories of the people buried there.



In Santa Fe, we walked through the downtown plaza, visited a church, had a fabulous lunch and shared Havdalah at Temple Beth Shalom, enjoyed a sumptuous Italian dinner, then crashed at the Inn at Santa Fe. Sunday morning finished with a visit to the arts section of Santa Fe, where we met Sarah Novenson, who is a wonderful painter of New Mexico landscape, but most notably, with regard to our trip, she shared with us her paintings of Biblical Jewish Women, including the stories and inspiration which drove her to create (continued on facing page)

*Bely kids*



these masterpieces.

Things have been pretty quiet with BETY this last couple of months, with Purim and Pesach and the coming of the end of school. But I wanted to tell you all how proud I am of the BETY guys who have participated in many of the events here at the temple, helped when help was needed and worked when work was asked of them. Most specifically, I would like to recognize Jacob Kelter, Prime Minister, the BETY Big Macher, who did all he could to keep things going with youth this year. He attended most of the NFTY weekend retreats and has shown himself to be a strong assistant in the Sunday School, there when we needed him, even after being up all night from his Prom. Jacob, we all wish you a “mazal tov gadol gadol” on your achievements and your May graduation from High School. You are an inspiration and we know you will have a monumental experience during your coming year in Israel, and your continued higher education. When you are studying in Illinois, please find a temple and involve yourself in education and youth, where you can share your knowledge and creativity and spread the cheer and feel the sheer enjoyment of knowing you have inspired others to follow in your footsteps.

BELY, the Beth-El Little youth, had a wonderful picnic and play day at the home of Paul, Lisa and Olivia Weinbaum. They barbecued hotdogs and devoured gigantic s'mores, went on a hay ride, played on the Weinbaum's 23' slide and swings, drenched each other with squirt guns and a bucket of water. That really cooled them off after the hot dusty, hay ride! My eternal gratitude goes to Susannah Skyer Gupta, for driving all the kids to the Weinbaum home, helping with coordination and food and just being a good MOM. Thanks go also to Paul and Lisa Weinbaum for inviting us to their beautiful home way out in the sticks behind “A” Mountain. And, they welcomed us with warmth and smiles.



*At left, David Fiszbein reads *The Mystery of the Coins* to his mother.*

## Religious School News

What a whirlwind of activities close out spring semester at Temple Beth-El Religious School! At the time of this writing, we have yet to enjoy our guided nature walk at the Mescilla Valley Bosque (thank you in advanced to outdoor educator and fellow congregant Gail Abend) or our second annual mountain Shabbat retreat (likewise, early thanks to the Doctors Hilbert). We did have a wonderful time celebrating the sixty-first birthday of the modern nation of Israel. Thank you to Morah Leora (Bet-Gimel teacher Leora Zeitlin), who has led this happening for years, yet manages to change it just enough each year to delight us all with something new. Thanks too to the Kelter-Zeitlin-Lapid family members who played a part: Israeli Film Board camerawoman Ilana Lapid, Bank of Israel Teller Talia Lapid, and Temple Beth-El-Al Pilot Stuart Kelter. In keeping with tradition, expert falafel maker Susi Kolikant led the kitchen crew, along with her beautiful daughters Rena and Talia, as well as Pearie Bruder, Jane Grider, Darrellyn Barrett, and Nancy Rushforth: todah rabah to all!

I hope all our students are enjoying a wonderful summer, continuing to keep up skills by attending services and/or enjoying the many fun, online Hebrew-learning resources available (The Behrman House Family Site is especially good: <http://www.behrmanhouse.com/family/>. More advanced students might enjoy challenging themselves with the place-an-object-by-its-Hebrew-name game at <http://www.zigzagworld.com/hebrewforme/>. Squeeze even more learning out of this by copying down each scene's vocabulary words and trying to learn them by heart!)

Temple Beth-El Religious School remains on summer break until Sunday, August 23. Please Contact Principal Bill Stein (373-8027, [starman@tbelc.org](mailto:starman@tbelc.org) with your religious school questions or comments.)

Outgoing Principal Susannah Skyer Gupta



## Sisterhood News

May was Book Fair time! By the time this Adelante is received and read, the Book Fair will have taken place. Thanks to all who contributed to this event from those who donated to those who helped set up and run the event under the most able leadership of Allen and Eve Palanker. Proceeds from the book sale will help support temple groups including the Religious School and Training Wheels.

June 24th is our annual Girlz Night Out. Watch for information by mail and email. Mark the date and plan to attend this elegant dessert and coffee bar evening. Join us in honoring Sisterhood Founding members, Bea Klein and Frances Williams. It will be an evening not to be missed! Other future events include a series of programs throughout the next year including a travelogue of TBE's trip to Israel.

As we move into summer, please remember the Sisterhood will continue meetings and events. Volunteer and join in the fun and perform a mitzvah or two along the way. If you have not joined, now is the perfect time to do so. You can join by contacting [tsugarma@yahoo.com](mailto:tsugarma@yahoo.com) or Stefani at the TBE office.

Have a great summer,  
Terri Sugarman  
Sisterhood President

**Delicious...**

**Exotic... Enticing...**



**And right in the heart of town...**

Come relax in our casual restaurant and café, serving a full menu ranging from falafel, hummus, baba ghanouj and Greek salad to lamb shanks and kebab. Choose an espresso drink to accompany your baklava, tiramisu, or cheesecake — then select something delicious to take home with you from our extensive selection of specialty groceries. Italian pasta? Swiss chocolate? Phyllo dough? Feta cheese? Proper British loose-leaf tea? Which of our olive oils will you try this time? Or why not let us cater your next party?

1245 El Paseo 505.647.5956

Mon-Sat. 7 am—midnight, Sunday 8 am—midnight



**Dr. Paul Feil, M.D., ABSM**  
Pulmonary Medicine  
Sleep Disorders

2437 S. Telshor Boulevard  
Las Cruces, N.M. 88011  
sleeplc.com  
(575) 522-2777  
Fax: (575) 522-4532



277 E. Amador  
Las Cruces, NM 88001

ANA M. MANGINO  
VICE PRESIDENT  
BUSINESS DEVELOPMENT  
amangino@fcbnm.com

T 575 636 6713  
F 575 636 6717  
M 575 642 6500  
www.fcbnm.com



www.fcbnm.com • 888.699.7500

*Not your typical bankers. Not your typical bank.*

Member FDIC

Equal Housing Lender



**HAIR DESIGNS**  
522-3959 (next to the Hilton)

Telshor Tower Plaza, 755 Telshor Blvd., Bldg. C, Ste. 201, Las Cruces, NM

**STEINBORN INC., REALTORS®  
GMAC REAL ESTATE™**

2802 Doral Ct., Las Cruces, NM 88011  
Office: (505) 522-3698  
E-Mail: evelyn@lascruces.com  
Internet address: www.homeslascruces.com  
Toll Free: 1-800-234-3698  
Direct: 532-2411  
Cellular: (505) 650-7224



**EVELYN BRUDER**  
ASSOCIATE BROKER



**WANDA MATTIACE**

Owner/Agent  
(505) 521-1400

**Adventure Travel & Cruise Center**

2460 Missouri Avenue  
Las Cruces, New Mexico 88001

FAX: (505) 521-0998



**Willman**  
CERTIFIED PUBLIC ACCOUNTANT

Lisa J.O. Willman  
(575) 522-3882  
Fax: (575) 522-3889  
Email: willman@zianet.com  
1744 S. Triviz Dr.  
Las Cruces  
New Mexico  
88001

*La Paz - Graham's Funeral Home*

**Jaime M. Aguilera**



555 W. Amador Ave.  
Las Cruces, N.M. 88005

Phone (575) 526-6891  
Fax (575) 526-4328  
lapaz-grahams.com



## *Donations and Tributes*

### **Library Fund**

From Barnett and Ruth Ann Sugarman in memory of Lillian Cooper

From Gary and Alison Mann, for the new Dewey Decimal Sytem

### **Irving Batkin Memorial Scholarship Fund**

From Mark and Sharon Steinborn, wishing a speedy recovery to Allen Palanker

### **Capital Campaign Fund 2004**

From Abe Pomerantz, in memory of Rebecca Pomerantz and Rae Dorfman

From Dee Cook, in memory of Frances Klempner and Rebekah Klempner Edelstein

### **Community Service Fund/Social Action**

From Susan and Yosef Lapid

### **General Fund**

From Bob and Cheryl Marians, in honor of the 60<sup>th</sup> Birthday of Rabbi Howard Laibson

From Grace Hammesfahr, in honor of Nina and Irv Rothman

From Helen Raphael, in memory of Gerry Leeser

From William and Maxine Webber, in memory of Tamara Entin

From Allen and Eve Palanker, in honor of the anniversaries of Judy and Harvey Hilbert and Phil and Sally Alkon

### **Rabbi's Discretionary Fund**

From Ezra Neidich, in memory of Ida Bass, Dorothy Blumkin, and Nate Weiselman

From Stefani and Mark Singer, wishing renewal and wellness for Stefani's son, Eric Uhley

From Suzanne Hendler, thanks for helping with the Hebrew names on my Ketuba

From Arthur and Lynn Berkeley, in memory of Arthur's Mother, Hilda Berkeley, Rita Joyce Hoxley Hilbert, mother of Harvey Hilbert and in honor of the Bar Mitzvah of Ford Parkes-Perret

#### *From the Treasurer*

Donations are gratefully accepted for the following:

#### *General Operating Fund*

for the Temple's day-to-day operation

#### *Fund 2004*

for upkeep and mortgage on our new building

#### *Community Service Fund*

for various projects that benefit both our community and Las Cruces/Southern New Mexico

#### *Send a Kid to Israel Program (S.K.I.P. Fund)*

to send Temple youth to Israel

#### *Irving Batkin Memorial Scholarship Fund*

to provide a Jewish education for our children: earnings from this fund are used mainly to offset the cost of operating our Religious School

#### *Frances Williams Library Fund*

To provide books and infrastructure for the Temple library.

#### *Rabbi's Discretionary Fund*

Periodically, the temple may list other short-term projects or needs. Contributions that do not specify a project or fund will be added to the General Operating Fund. If you have a question or wish to contribute for a project not listed here, please contact Treasurer Allen Palanker.

### **Todah Rabbah y Muchas Gracias**

Our deep thanks and appreciation go to our volunteer choral group, The Zamir, for their moving and lyrical program for Yom Ha'atzmaut. Participants in the Zamir are Grace Ann Genin, Jane Grider, Corry McKissack, Susan and Patrick Quinn, Amy Siegel, Stefani Singer, Jon Swann, and director, Terry Hicks.

In the coming year, enjoy their participation in our services on Erev Rosh Hashanah and monthly thereafter. If you would like to join the Zamir, call the Temple to leave word for Terry Hicks.

### Donations (continued)

From Jay and Roni Spetalnick, in memory of Roni's father, Bernard Liftin

### Adult Education

From Allen and Eve Palanker, in honor of the Bar Mitzvah of Ford Parkes-Perret


### Sisterhood

Alice Ybarra donated Chanukah Cards for the Judaica Shop

Many thanks to Linda and Chuck Kruger for their donation of a laser printer to the Temple Beth-El office, and to Mike Lieberman for his donation of a wireless keyboard for the office. Your efforts on behalf of our congregation are greatly appreciated and your generosity is a blessing.

### General Fund

From Miriam Ries and Pat Pedersen, in memory of Fred Ries



**SONOMA RANCH**

**David M. Steinborn**  
 Construction & Development  
 Sonoma Ranch Golf  
 Sunset Grill

**141 Roadrunner Parkway**  
**Suite 224**  
**Las Cruces, NM 88011**

**575.521.0770 (office)**  
**575.644.3136 (cell)**

**david@sonomaranch.com**

Join in an Erev Tisha B'Av Observance  
 "There is Hope For Your Future"  
 Readings, Remembrances and Reinterpretations  
 of our people's mourning Jewish national tragedies

7:30 P.M. July 29<sup>th</sup>, 2009


Candle light Service  
 Inspiring Music  
 Selections From Megillat Eicha, Lamentations  
 Discussion

*Domestic Worker Services Available*  
 Household organizing projects  
 Errands  
 Pruning/Gardening  
 Window Washing  
 Frances Escola  
 202-9960

*La Fiesta*  
**BAKERY** L.L.C.

455 N. Valley Dr. Suite #3  
 Donuts Cookies Cakes Pies  
 Breads Bolillos Mexican Pastries  
 & Sugar Free Products  
 Challahs by special order

Ramon O. (Ray) & Eugenia M. (Gina) Ortega  
 Owners



(575)  
 647-5800  
 312-2500

TLC Pet Sitting, LLC

Maisa I. Schoenbaum  
 CEO & Pet Enthusiast



Phone: 575-915-2110  
 Email: tlcpetsit@gmail.com  
 Web: www.tlcpetsit.vpweb.com



## June Yahrzeits

### Read on June 5 Sivan 8 – 14

Irving Schindler, stepfather of Dave Zeemont  
 Shirley Ruttenberg, sister of Marion Deutschman  
 Anna Weinglass, mother-in-law of Teddy Weinglass  
 Harry Levine, father of Elaine Levine  
 Harriett Mandel, mother of Michael Mandel  
 Luba Klaitman, mother of Rita Polsky

### Read on June 12 Sivan 15 – 21

Dora Kirschner, mother of Mel Kirschner  
 \*Michael Bruder, son of Murray and Evelyn Bruder  
 Carl Caplan, father of Betty Rosse  
 Sarah Eskin, sister of Charles Kruger  
 \*Andrea B Siegel, daughter of Barbara Siegel  
 \*Esther Edelstein Berlin, grandmother of Dee Cook  
 Carolyn Meyers, mother of Matt Meyers  
 \*Benjamin Siegel, grandson of Barbara Siegel  
 Aaron Hyman, father of Michael Hyman  
 Miriam Kuznekoff, mother of Chuck Kuznekoff

### Read on June 19 Sivan 22 – 28

Fred Ries, father of Miriam Ries  
 Siebert Feldman, husband of Louise Baskey  
 Martha Katz, aunt of Helen Raphael  
 \*Abe Orner, father of Ralph Orner  
 Nathan Mandel, father of Michael Mandel  
 Clara Kleiner, grandmother of Rachel Stevens  
 \*Steven R Pasternack  
 Lena M Schwartz, mother of Burton Schwartz

### Read on June 26 Sivan 29 – Tammuz 5

Max Goldstein, grandfather of Maxine Webber  
 \*Mildred Mirrop, mother of Barbara Orner  
 Helen Cohen, mother of Howard Cohen  
 \*Asher Segen, brother of Lea Weiselman  
 Pearl Weisman, grandmother of Cyrille Kane  
 \*Max Taub  
 Leonard Weinglass, husband of Teddy Weinglass  
 Henrietta Horowitz, mother of Marion Deutschman  
 Martha Katz, mother of Helen Raphael  
 Chaya Harary, daughter of Jayne, sister of Tom Harary  
 Leo Steinborn, father of David and Mark Steinborn,  
 grand father of Jeff Steinborn

In order to ensure that the name of your loved one will be recited at a Friday night Shabbat service, we have instituted the following practices:

- The Hebrew dates for each week's yartseyt are listed in each Newsletter.
- Hebrew vs. conventional calendar: The temple's tradition is to base the yartseyt list on the Hebrew calendar. Those who wish to have a name read on a Friday night close to the non-Hebrew calendar date are asked to please email or call Stefani Singer a few days prior to the service.

Asterisks at left indicate that a loved one has been permanently memorialized with a plaque in the Temple sanctuary. If you are interested in acquiring a plaque for your loved one, contact Stefani Singer at the Temple.

## July Yahrzeits

### Read on July 3 Tammuz 6 – Tammuz 12

\*Roslyn Rice  
 Jerome Kampf, father of Laurie Savitt  
 \*Jennie Frank  
 Milton Berkson, father of Burt Berkson  
 Dora Stern, mother of Ann, Bubbe of Arthur  
 Lena Schwartz, mother of Burt Schwartz  
 Sylvia Weiner, great grand aunt of Robin Cohen

### Read on July 10 Tammuz 13 – Tammuz 19

Albert Magidson, grandfather of Susie Citrin  
 Rose Lieberman, mother of Bernie Lieberman

### Read on July 17 Tammuz 20 – Tammuz 26

\*Moses Aaron Buchalter, uncle of Ralph Orner  
 Sugiyara Chiune, Friend to the Jews  
 \*Jacob Krasner, father of Frima Marquez  
 \*Joseph Rosenfeld, relative of Ann Hansen  
 David Williamson, uncle of Barbara Mandel  
 \*Burton Zuckerman, husband of Ladell Stern Zuckerman  
 Bernard Singer, father of Mark Singer



## July Yahrtzeits *(continued from p. 10).*

### **Read on July 24      Tammuz 27 – Av 4**

Ludwig Paul Bergman, relative of Nancy Bergman

\*Manny Blumkin

Sam Maness, great uncle of Stefani Singer

Marry M Schwartz, father of Burton Schwartz

Louis E Benson, father of Stephen Benson

Jacob Dash, father of Bernard Dash

\*Carmen Freudenthal, mother of Elsa Altshool

### **Read on July      Av 5 – Av 11**

Magda Farkas, step-mother of Yosef Lapid

Lillian Krasner, mother of Frima Marquez

Scott Klein, nephew of Bea Klein

Jacob Klempner, grandfather of Dee Cook

\*Doris Orner, mother of Ralph Orner

\*Esther Seidman

Rea Bienstock, mother of Gerie Muchnikoff

\*Meyer Eidman

\*Dorothy Rashal

\*Meyer Seidman

\*Charlotte Pollack



*Above, Mia Berkson leads the way during Israeli folk dancing at the Training Wheels/religious school Yom Ha'Atzma'ut Happening.*

*At left, Elena Sarabia and Jordan Munda exchange money with Bank of Israel Teller Talia Lapid before entering the shuk at the religious Yom Ha'Atzma'ut Happening.*

*New Member Q & A: Patrick Kaye Quinn & Susan Kaye Quinn*

By Jim Rosenthal

**What did you do before moving to Las Cruces?**

We arrived from the suburbs of Washington D.C. Susan arrived in October and Patrick arrived in January. He retired in November after 25 years as a psychologist for the Central Intelligence Agency and then worked as a consultant. She retired two years ago as chief of social work for the Bethesda Naval Hospital. Our daughter Abigail is studying for her doctorate in industrial engineering at Michigan State and will be married at the end of May. Patrick is a Jew by Choice while Susan was born Jewish. For many years we were member of a reconstructionist congregation in Washington D.C.

**Why did you relocate here?**

In 2005, we bought a house here knowing we would retire here. Patrick grew up thinking he wanted to live in the desert. Susan was born in Connecticut and Patrick grew up in upstate New York. We had enough snow for a lifetime. Susan has family in Phoenix but it is too hot there.

**What are your interests and leisure activities?**

Patrick is a runner and Susan does yoga. Susan is on the board of the Temple sisterhood. Patrick has attended Academy of Learning classes. We love classical music and are impressed with how much wonderful classical music there is here and in El Paso. We attend public lectures at NMSU. We have an eight-pound miniature Daschund named Blossom.



**The Family of Benjamin Fiszbein  
Invites the Temple Beth-El Congregation**

**to help us celebrate**

**his Bar Mitzvah**

**Saturday, June 27, 2009**

**10:15 A.M.**

**Reception to follow**

**PLEASE JOIN US!**



## June Shabbat Schedule

Friday, June 5 <sup>th</sup>	5:45 P.M.	Family Kabbalat Shabbat Potluck Dairy Dinner following services Service led by Susannah Skyer Gupta and Stefani Singer
Saturday, June 6 <sup>th</sup>		
	9:00 A.M.	Talmud Study
	10:15 A.M.	Service and Kiddush Parashat Naso Numbers 4:21-7:89 Haftarah Judges 13:2-25
Friday, June 12 <sup>th</sup>	7:30 P.M.	Service and Oneg Installation and Recognition of Temple Board Rabbi Citrin will discuss the Israel Trip
Saturday, June 13 <sup>th</sup>		
	9:00 A.M.	Talmud Study
	10:15 A.M.	Service and Kiddush - Lay led Parashat B'ha'alotcha Numbers 8:1-12:16 Haftarah Zechariah 2:14-4:7
Friday, June 19 <sup>th</sup>	5:45 P.M.	Kabbalat Shabbat (Light snack at 5:15 P.M.)
Saturday, June 20 <sup>th</sup>		
	9:00 A.M.	Talmud Study
	10:15 A.M.	Service and Kiddush Guest Cantor: Murray Simon Parashat Shelach Lecha Numbers 13:1-15:41 Haftarah Joshua 2:1-24
Friday, June 26 <sup>th</sup>	7:30 P.M.	Service and Oneg Rabbi Citrin will teach
Saturday, June 27 <sup>th</sup>		
	9:00 A.M.	Talmud Study
	10:15 A.M.	Service and Kiddush Bar Mitzvah of Ben Fiszbein, son of Drs. Abraham and Amy Fiszbein Parashat Korach Numbers 16:1-18:32 Haftarah I Samuel 11:14-12:22



## July Shabbat Schedule

Friday, July 3 <sup>rd</sup>	5:45 P.M.	Family Kabbalat Shabbat	
		Potluck Dairy dinner following services	
		Led by Rabbi Citrin and Stefani Singer	
Saturday, July 4 <sup>th</sup>			
	9:00 A.M.	Talmud Study	
	10:15 A.M.	Service and Kiddush	
		Parashat Chukkat-Balak	Numbers 19:1-25:9
	Haftarah	Micah 5:6-6:8	
Friday July 10 <sup>th</sup>	7:30 P.M.	Service and Oneg	
		Rabbi Citrin will teach	
Saturday, July 11 <sup>th</sup>			
	9:00 A.M.	Talmud Study	
	10:15 A.M.	Service and Kiddush - Lay led	
		Parashat Pinchas	Numbers 25:10-30:1
		Haftarah	Jeremiah 1:1-23
Friday, July 17 <sup>th</sup>	5:45 P.M.	Kabbalat Shabbat	
		(Light snack at 5:15 P.M.)	
Saturday, July 18 <sup>th</sup>			
	9:00 A.M.	Talmud Study	
	10:15 A.M.	Service and Kiddush	
		Parashat Mattot-Masei	Numbers 30:2-36:13
		Haftarah	Jeremiah 2:4-28; 3:4
Friday, July 24 <sup>th</sup>	7:30 P.M.	Service and Oneg	
		Rabbi Citrin will teach	
Saturday, July 25 <sup>th</sup>			
	9:00 A.M.	Talmud Study	
	10:15 A.M.	Service and Kiddush	
		Parashat Devarim	Deuteronomy 1:1-3:22
		Haftarah	Isaiah 1:1-27
Friday, July 31 <sup>st</sup>	7:30 P.M.	Service and Oneg	
		Rabbi Citrin will teach	
Saturday, August 1 <sup>st</sup>			
	9:00 A.M.	Talmud Study	
	10:15 A.M.	Service and Kiddush	
		Parashat Va'etchanan	Deuteronomy 3:23-7:11
		Haftarah	Isaiah 40:1-26

## ONGOING EVENTS

**TEMPLE BREAKFAST**—Weekly breakfast meetings and discussions of Jewish interest will be held at the Temple at 9AM on Wednesdays, with bagels and coffee provided.

**MENSCH CLUB**—“Discovering Judaism Through Film” is a year-round, once-monthly film series for all Temple Beth-El members and their guests sponsored by the Temple Beth-El Mensch Club. Films pertaining to a wide range of Jewish-related topics are shown on the third Tuesday of each month at 7:30PM at the Temple. The movies are free, but donations for sodas and snacks are welcome. Anyone with a film they wish to share with the community are encouraged to contact Phil Alkon, Mensch Club Film Chair, at 524-6945 or [palkon@aol.com](mailto:palkon@aol.com). Regular Mensch Club meetings are held on the first Tuesday of each month at 7PM at the Temple. For additional Club information, please contact Ford Parkes-Perret, Mensch Club President, at 373-0334 or [Fordparkesperret@comcast.net](mailto:Fordparkesperret@comcast.net).

**TALMUD STUDY**—Talmud study meets every Saturday in the Social Hall before the new Saturday morning services. Prospective students are welcome and may contact Erich Zameret or Tana Hemingway for more information.

## June-July

**There will be  
NO MENSCH CLUB  
during the months of June and July**

**JUNE 5: SHABBAT POTLUCK**—There will be a family service and a potluck beginning at 5:45PM, to celebrate our religious school faculty: Susannah Gupta, Stefani Singer, Judy Hilbert, Erich Zameret, Leora Zeitlin, and helpers Jacob Kelter and Scooter Weeks.

**JUNE 20—CANTOR’S CABARET**—This cantorial presentation will be in lieu of the Gala for the time being. Tickets are \$40, and include a wine and cheese reception at 7:30PM, followed by a cantorial performance at 8:15. See p. 1 for more details, and page 3 for a biography and picture of the performing artist.

**JUNE 21—CANTOR’S BREAKFAST/VIDEO PRESENTATION**—Tickets are available for \$8 for a breakfast with Cantor Simon, followed by a video presentation of great cantors of the Golden Age. See p. 1 or contact Stefani at 524-3380 for more details.

**JUNE 24—SISTERHOOD GIRLZ NIGHT OUT**—See p. 6 for more details on the annual event.

**JUNE 27: BEN FISZBEIN’S BAR MITZVAH**—Plan to come and celebrate at 10:15 at the Temple.



*Above: The BELY crew make smores.*

**TEMPLE BETH-EL, LAS CRUCES, NEW MEXICO**

3980 Sonoma Springs Ave  
Las Cruces, NM 88011

Phone: 575.524.3380  
Fax: 575.521.8111  
President Paul Feil  
feil@zianet.com  
admin@tbelc.org

The Temple Beth-El Newsletter is produced regularly at Las Cruces, New Mexico. Editor: Jamie Bronstein. Copy Editors: James Rosenthal and Rabbi Kane. Circulation: Stefani Singer. We welcome contributions by, about, or for temple members. Contributions can be mailed to the temple or emailed to [nmbethelnewsletter@yahoo.com](mailto:nmbethelnewsletter@yahoo.com). We reserve the right to edit all contributions and advertisements. We do not return contributions to authors unless sent with a self-addressed prepaid envelope. Non-member subscriptions are \$25/year. Advertising: 2x3 (business card): \$120/yearly. Quarter page: \$220/yearly. Half page: \$450 yearly. For information about ads or insertions please contact the editor.

**TEMPLE BETH  
-EL IS ON THE  
WEB ! HTTP://  
NM002.URJ.NET**

June/July 2009



Temple Beth-El  
3980 Sonoma Springs Ave  
Las Cruces, NM 88011

NONPROFIT ORG.  
U.S. POSTAGE PAID  
LAS CRUCES, NM  
PERMIT NO. 537