

“I looked after you in the desert...” Hosea 13:5

¡Adelante! Temple Beth-El Newsletter

OCTOBER 2009— TISHREI-HESHVAN 5770



Temple Beth-El

Desert Walking

By Gabriel Lampert

In 1972, I studied at the WUJS Ulpan in Arad, Israel. Officially sponsored by the World Union of Jewish Students, it was a residential school where, for very little cash, students with a bachelor's degree learned Hebrew as well as the ins and outs of Israeli culture and history, complete with extensive *tiyyulim*, trips through the country. Room and part board were included. In 2008, the program in Arad was closed; now there is one set in Jerusalem and Tel Aviv.

During my time at WUJS, students came from Australia, New Zealand, England, Ireland, France, South Africa, Rhodesia (now Zimbabwe), and probably a few other places. We were housed 4 to a two-bedroom apartment. The atmosphere was exciting, and I enjoyed getting to know new people. I am still in contact with two from that class.

Still, sometimes I longed to be alone, and often resorted to long, long afternoon walks with the ulpan's adopted dog, Keffie, probably a whippet-dachshund mix. Arad is located due south of Jerusalem, due east of Be'er Sheva (where our water was piped in from – if the pressure was low, those of us on the fifth floor had to take showers in an apartment lower down). Everything led downward from Arad because it occupied a high spot in the desert. It was easy to get away from people, because Arad, an intentional development town, was situated smack in the middle of the desert. On one side of the street were five-story apartment buildings, and on the other side nothing at all.

Keffie and I usually walked north into the desert to follow a *nahal* (arroyo downwards as far as we dared. These days there is a road in that direction, though I don't know how far it goes, but on the other hand these days people don't take desert walks as much. There are paths through the wilderness, and I used to wonder if they were the same ones that David used when running from Saul, or that Elijah had frequented. The *nahal* meets another one not too far on, and there is a cistern there to collect winter rainwater. Just like at the 9000- year-old archeological site at Jericho, the cistern is cemented all around the rim, with gouges showing where ropes were used to haul water up; it made me wonder how old “my” cistern was, and whether it was still in use. Farther down the *nahal*, there was a more recent catchment area built of brick.

In winter, it was easy to follow the path, but with spring the desert was so filled with flowers that the paths were hard to see, and I sometimes slipped on the slick vegetation. I also remember something else I saw on one of those trips: I caught sight of something black and white sitting or standing off in the distance. (*continued on p. 4*)

Temple Beth-El Mission Statement

Temple Beth-El is dedicated to creating and maintaining an intimate and involved Jewish community. We strive to be a place where spiritual growth, tradition, and ritual provide meaning and comfort to every person who comes through our doors. Temple Beth-El encourages its members to learn, celebrate, serve, and grow together, so that each person will have the fullest opportunity to share the beauty of Jewish expression.

TABLE OF CONTENTS

Contacting The Temple	2
Donations	14
In Memoriam	9
President's Message	3
Rabbi's Message	2
Religious School	11
Sisterhood	4
Shabbat Schedule	12
Social Action	5
Upcoming Events	15
Youth Groups	10

**Contacting
Temple Beth-El**

Mailing Address:
3380 Sonoma Springs Ave.,
Las Cruces NM 88011

Fax: 521-8111

Rabbi:
Paul J. Citrin
rabbi@tblc.org
575-524-3380

President:
Mark Steinborn
(575) 405-7675
steinborn@aol.com

Vice-President:
Jay Spetalnick

Treasurer:
Paul Feil

Secretary:
Bill Stein

Board of Trustees at Large:
Arthur Berkson, Mike Lieberman,
Michel Mandel, Allison Mann,
Josh Rosenberg, Marty Poel,
Buzzie Lieberman, Ford Parkes-
Perret, Marianne Panzini-
Rosenthal

Temple Administrator:
Stefani Singer
admin@tblc.org

Sisterhood Rep:
Buzzie Lieberman

Mensch Club
Ford Parkes-Perret
fordparkesperret@comcast.net
373-0334

Religious School:
Bill Stein
starman@tblc.org

Sisterhood:
Terri Sugarman

Hadassah:
Diane Bass 522-3833

Worship Committee:
Stuart Kelter

**Beth-El Temple Youth
(BETY) :**
Ben Jacobs, bajaco@hotmail.com
Jonathan Kolikant,
jkolikant@gmail.com

Rabbi Emeritus:
Gerald M. Kane
jercyrl@aol.com
532-8888

Message from Rabbi Citrin:

“Ufros aleinu sukkat shlomecha.”

“Spread over us Your Sukkah of peace.”

Dear Friends,

The quote at the top comes from the Hashkiveinu, a prayer recited each evening of the year. We ask God to shelter us with peace. What is that shelter made of?

This coming Friday evening, our festival of Sukkot begins at sundown. We need only to contemplate the Sukkah, the simple hut standing in the Temple yard, to get an idea of what God’s shelter of peace is.

The Sukkah is an open structure. One entire side is wide open. The thatched covering on its roof must not be so thick as to prevent a person from seeing the sky and stars. Even the sides allow for plenty of light and air to penetrate the Sukkah.

The Sukkah is an impermanent structure. It is put up immediately after Yom Kippur, and taken down right after Simchat Torah. During the eight days of Sukkot, however, it is a focal point for family life and hospitality.

The Sukkah is a frail structure. It easily sways with wind and rain, buffeted by the elements. Yet, it has always provided essential shade and a place to rest for farmers and wayfarers.

Consider the Sukkah and you will know what comprises God’s “Sukkah of peace.” Approaching life with openness to new ideas, to fresh relationships, to improving and exploring the richness of long-time relationships spreads over us a shelter against stagnation, habit and deadening routine. Recalling that life, like the Sukkah, is impermanent ought to lead us to cherish time, family bonds, experience, opportunities to give of ourselves. The only kind of permanence we can hope for is the good we do and the people we influence. Mindfulness about life’s impermanence shelters us from wasting time, taking others for granted, and sleep-walking through life.

The Sukkah’s frailty suggests that if we have the shade of love and the calm that comes from appreciation, we will be sheltered from rampant materialism and insatiable appetites. This year’s recession should have helped us learn that love, health, meaningful work and compassion are all we really need. They shelter us from loss and disappointment.

The shelter or Sukkah we ask for is shalom rather than peace. Peace indicates absence of strife. Shalom connotes wholeness, completeness and fulfillment. May we attain God’s Sukkah of shalom through our openness, our rapt attention to life, our appreciation of the blessings we have.

Chag Same’ach,

Rabbi Paul J Citrin

Vice-President's Message:

When Leaders Learn to Follow and Followers Learn to Lead

This month's *Message from the President* was written by our Vice-President, Jay Spetalnick.

Earlier this summer, I was asked by our TBE President, Mark Steinborn if I would chair the Future Planning committee. What is that I wondered? The answer came clear following a conversation I had with Rabbi Citrin – future planning is all about responding to change. It is about integrating the best of the past, respecting the traditions we have come to know and love, remaining observant to our religion, and at the same time understanding change and how that affects our Temple and our community. My interest was piqued and I spoke to family and friends from elsewhere about this topic. Lo and behold, I found out that their synagogue communities were either planning to or had already embarked on a process by which they would reflect on who they are, who they want to be and how they have changed over time.

I presented an outline of what is meant by Future Planning and suggested a strategy to the TBE Board at our Retreat in mid August. As I am new to this type of exercise I was grateful to Rabbi Citrin for providing me with an invaluable resource, a book entitled “The Self-Renewing Congregation” by Isa Aron. What engaged me after reading the book is what I am hoping engages you, members of Temple Beth-El. The author lays out the whys and the hows, the visions and the tools for revitalizing congregational life. Currently, the Board and Future Planning Committee is going through a careful review of the book, will discuss the strategy and implementation of the process and then we will invite all members to get involved in planning our future. Isa Aaron argues that the mission of religious institutions is “not to sell a product or even to deliver a service but to create spiritual communities that nurture and challenge their members.”

Although we have just celebrated the 5770th year of our Jewish existence, synagogues have been in existence for more than 2500 years. From then to now just think of how the communities of these synagogues have evolved and had to respond to change in order to remain vibrant. Of course some of us see that change happening all too fast, and for others the change is not happening fast enough. To make this exercise meaningful and to grow and nurture our feeling of community we need all our members to get involved in this process. Everyone in our community has thoughts, feelings and opinions that are valued and valuable. Ultimately through this process we hope to create a community that sees Temple Beth-El as being more relevant, precious and meaningful in their lives. It is our hope that all members of the congregation will take the opportunity to become a part of the process. Listen to fellow congregants and hear what they have to say. Understanding who we are, and then mapping out our future as a community is what will bind us together as we collectively arrive at our common purpose.

I look forward to being a part of this. I look forward to meeting you all as we embark on this journey.

Jay Spetalnick
Vice-President, Temple Beth-El



Desert Walking (continued from p. 1)

Was it a Bedouin? a bird? The dog seemed unaware of it, and only when we came much closer did it very slowly spread its wing and take off.

Only once did we venture off in the other direction, southward from Arad. The paved road down to the Dead Sea drops precipitously after leaving town, but we followed a parallel jeep track, much shallower, that skirted the hillside, becoming ever higher above the road. Suddenly, we heard a horribly loud roar coming at us from behind. The dog became more and more distressed, her ears flat back against her head, her eyes bulging. The sound grew even louder, until we saw the Phantom jet just about at eye level – I could see the red circle on its nose.

The plane passed by; I was relieved, but the dog took a long time to recover, and we never took that walk again. As I later found out in class, the Arad area contains a number of training sites for the Israeli air force, and accuracy in approach to land objects is part of the training.

If you sign up for the WUJS ulpan, it won't be in the desert, but I suspect it is still a great bargain. You can look it up at www.wujisrael.org.

Gabriel Lampert is a former Temple Beth-El member and past President of the congregation; he now lives in San Francisco.

A Letter from the Sisterhood President

Dear Women of Temple Beth-El;

As most of you know Temple Sisterhood is the organization of the women of Temple Beth-El . We come together as a group of women committed to Reform Judaism to plan and implement programs that will benefit Temple Beth-El. We support programs within Temple Beth-El such as Training Wheels, and in addition we provide funds to Beit She'an, a home for orphaned youth in Israel. We organize social activities for the Temple and the greater Las Cruces community. We also offer opportunities for women to study and learn about Judaism and provide the opportunity for women to fulfill their individual potential as a person and as a woman of Reform Judaism.

As a member of Temple Sisterhood women have the chance to meet other women and work together to provide meaningful programs for women and to initiate and develop projects to benefit the congregation as a whole.

Sisterhood carries out its mission through the work of various committees. These committees, such as membership, the Judaica shop, the Oneg Shabbat Committee and others, allows members to work with a team to ensure the goals of the Temple and the Temple Sisterhood are realized. This team effort brings with it a sense of camaraderie and friendship as women with common bonds work to bring joy and fun, education and spirituality to the Temple community. Of course sisterhood isn't always about work – it is about meeting people and making friends. We host many activities just for us –in fact many of you participated in the Ladies' Night Out on June 25 where a fun time was had by all.

(continued on p. 9)



OUR ENERGY CHALLENGES – WHERE THE ACTION IS

By Phil Alkon

No issue poses a greater challenge to human welfare and survival than the way in which we choose to use or misuse the energy resources with which we have been blessed here on Earth. On the one hand, energy policy and practice increasingly impacts our daily lives, our economies, our environments, and our national security. On the other, Jewish values and ethics demands that we actively engage in meeting energy-related threats to humanity and to all of God's creation on this precious and vulnerable planet. Energy challenges affect us at all levels of human experience, from individuals and communities, to nations and global ecosystems. So too must we commit ourselves to effective action, first as individuals and a community in living more energy-conscious, energy-smart and energy-ethical lives; and then, as citizens of a democratic society, in promoting effective and moral societal responses.

Our Social Action Committee intends to engage the TBE community in an effort to understand energy challenges and to promote ethical energy practices and programs. As a first step, I would like you to consider three past, recent and future energy-related local events that pertain to us as Temple Beth-El congregants and as Las Cruces residents.

A Past Event. On Feb. 25, 2009, Albert Cueto and Walter Guerrero of El Paso Electric conducted a comprehensive Energy Audit of Temple Beth-El, and were accompanied by Mike Lieberman and Phil Alkon. Their survey covered the entire building from the rooftop and all rooms, to all electrical equipment, appliances and devices. We received a glowing report on the building's overall design and its heating cooling systems from an energy efficiency perspective. Their written report also provides useful suggestions on specific steps we can take to reduce current electrical inefficiencies (and cut our electric bills!). We will share details with you in future announcements.

A Recent Event. A two-day conference on "Re-energizing America," held recently at NMSU and promoted by Congressman Harry Teague, saw the participation of prominent government, academic, industry, consultant and political types, including U. S. Energy Secretary Steven Chu. The meeting covered a wide range of energy issues and technologies, and played before a capacity audience including several TBE members. The sessions I attended were informative, thought provoking, and even entertaining. You can watch videos of all conference events by going to the NMSU website: <http://energize.nmsu.edu>; and click on "Archived Presentations." Here are some of my random observations and impressions.

- See Steven Chu's keynote talk on video. He's an exceptional Energy Secretary and public servant. Intelligent, pragmatic, straight talking, knows energy, and knows how science can contribute.
- The initial emphasis of federal energy policy is on energy conservation and efficiency in buildings and facilities. The technology is available and can be started immediately. Like modern autos, future houses and other buildings will have electronic sensors and computer controlled heating and cooling systems. Big energy savings.
- We will still have a substantial mid- to long- term dependence on fossil fuels, despite large future oil price increases and tougher caps on carbon emissions. Compressed natural gas is clean and abundant, and may prove to be a viable alternative to petroleum fuel for vehicles. Coal is dirty, but cheap and abundant in the U.S., China, India, South Africa, and elsewhere. We will need to develop clean coal technologies. (*continued on p. 8*)





GREEN ACTION

If every household in the US replaced just 1 box of 18 load petroleum based powder with a plant based product, we could save 100,000 barrels of oil...enough to heat 5800 homes in the US per year.

New Members

Temple Beth-El welcomes new members, Kathi Barit, Jay and Alexandra Furnari, Allen and Michelle Blum, Jane Grider and Senator Steve Fischmann. We look forward to seeing you at the temple and getting to know you.

Thanks for the Piano!

The congregation thanks Jay and Alexandra Furnari for their generous donation of a beautiful piano which currently stands in the sanctuary.

Temple Board Meetings

Board meetings will be held the third Thursday of every month, and you are invited! Check out the temple's new website at tbelc.org for the board meeting agenda, which will be posted there in advance.



Delicious...

Exotic... Enticing..

And right in the heart of town...

Come relax in our casual restaurant and café, serving a full menu ranging from falafel, hummus, baba ghanouj and Greek salad to lamb shanks and kebab. Choose an espresso drink to accompany your baklava, tiramisu, or cheesecake — then select something delicious to take home with you from our extensive selection of specialty groceries. Italian pasta? Swiss chocolate? Phyllo dough? Feta cheese? Proper British loose-leaf tea? Which of our olive oils why not let us cater your

will you try this time? Or next party?

1245 El Paseo

505.647.5956

Mon-Sat. 7 am—midnight,

Sunday 8 am—midnight





Dr. Paul Feil, M.D., ABSM
Pulmonary Medicine
Sleep Disorders

2437 S. Telshor Boulevard
Las Cruces, N.M. 88011
sleeplc.com
(575) 522-2777
Fax: (575) 522-4532



277 E. Amador
Las Cruces, NM 88001

ANA M. MANGINO
VICE PRESIDENT
BUSINESS DEVELOPMENT
amangino@fcbnm.com

T 575 636 6713
F 575 636 6717
M 575 642 6500
www.fcbnm.com



www.fcbnm.com • 888.699.7500

Not your typical bankers. Not your typical bank.

Member FDIC

Equal Housing Lender



HAIR DESIGNS
522-3959 (next to the Hilton)

Telshor Tower Plaza, 755 Telshor Blvd., Bldg. C, Ste. 201, Las Cruces, NM

**STEINBORN INC., REALTORS®
GMAC REAL ESTATE™**

2802 Doral Ct., Las Cruces, NM 88011
Office: (505) 522-3698
E-Mail: evelyn@lascruces.com
Internet address: www.homeslascruces.com
Toll Free: 1-800-234-3698
Direct: 532-2411
Cellular: (505) 650-7224



EVELYN BRUDER
ASSOCIATE BROKER



WANDA MATTIACE

Owner/Agent
(505) 521-1400

Adventure Travel & Cruise Center

2460 Missouri Avenue
Las Cruces, New Mexico 88001

FAX: (505) 521-0998



Willman
CERTIFIED PUBLIC ACCOUNTANT

Lisa J.O. Willman
(575) 522-3882
Fax: (575) 522-3889
Email: willman@zianet.com
1744 S. Triviz Dr.
Las Cruces
New Mexico
88001

La Paz - Graham's Funeral Home

Jaime M. Aguilera



555 W. Amador Ave.
Las Cruces, N.M. 88005

Phone (575) 526-6891
Fax (575) 526-4328
lapaz-grahams.com



Our Energy Challenges (continued from p. 5)

- Nuclear energy will be a bigger part of the U.S. electricity package, probably in the form of many smaller plants. Nuclear is clean and pays off economically. Security is a big challenge, but waste storage is less so now due to effective means for recycling spent rods. Public acceptance of nuclear is the challenge.

- By 2020, 20 percent of U.S. electricity must be generated by alternative energy sources, all of which have significant potential but pose practical challenges. For example, wind and solar energy facilities will not be sited in dense population areas where electricity is needed. Attendant electricity storage and distribution issues need to be solved.

- Widespread electrical “microgrids” for serving local communities and industries from on site alternative energy sources (wind, solar, biofuels, geothermal) are a likely development. Implementing an effective national electricity grid, however, is a huge economic and political challenge. It will only happen incrementally

- Everyone says New Mexico has a great energy future. It’s a natural for wind, solar, biofuels (especially algae) and geothermal; and has abundant natural gas to boot. Our universities and the Los Alamos and Sandia National Labs are also big pluses. Many green jobs are in the offing.

- Science will play a big role in our energy future. Steven Chu cited Bell Labs (for electronics) and Los Alamos (for nuclear) as examples of outstanding individual research centers that created new technologies which changed our lives. No such national research center dedicated solely to energy exists yet, but Chu is now establishing one.



- Industry needs predictable government regulations and policy in order to raise private money for alternative energy developments. For example, a biofuel industrialist said it was essential to know which specific plant “feedstock” species were going to be subsidized in public energy programs for the long-term in order to make a go of it commercially.

Finally, public education can pay off. California has the highest electricity rates (dollars per kilowatts) in the U.S., but the lowest overall electricity costs per family in the country. That’s because the public was educated on how to conserve energy, so that Californians simply use a lot less electricity per family on the average.

A Future Event. The Social Action Committee will host a panel discussion and public forum on “Our Energy Challenges” at Temple Beth-El on Saturday, November 14th. This event will follow our regular Shabbat service and lunch, and will take place in the Sanctuary beginning at 12:45 p.m. A panel of five experts will address the following questions: 1) What is the present energy crisis all about? 2) What are the economic implications of various energy alternatives? 3) What are the environmental costs of alternative energy futures?, 4) What is the shape of new energy legislation?, and 5) How can faith communities like Temple Beth-El help to meet our energy challenges? Following panel presentations, the floor will open to public comments and questions. We hope that you will attend.



October Yahrzeits

Read on October 2 Tishrei 9—15

*Yetta Feldman
 *Martin Grenfield
 *Martin Muffs, brother of Carol Bernstein
 Abraham Cherkasky
 *Rose Sommers, great aunt of Frances Williams
 *Sam Sommers, great uncle of Frances Williams
 *Benjamin Golden
 *Mary Krepps
 *Norman Oretskin, father of Nancy Oretskin
 *Mabel Stern, mother of Dell Zuckerman
 *Herman Limmer
 Gary David Liston, son of Nina Rothman
 Dorothy Rabinovitch, mother of David Rabinovitch
 Bernice Deutscher, aunt of Stefani Singer

Read on October 9 Tishrei 16—22

*Rabbi Joseph Klein
 Reba Kirschner, aunt of Gabriel Lampert
 Helene F Rosenbaum, mother of Joan Silar
 Lillian Evelyn Bernstein, mother of Marvin Bernstein

Read on October 16 Tishrei 23—29

David Sugarman, father of Barnett Sugarman
 *Elanor Ulrich
 *Barnet Katz
 Harry Rosenmayer, grandfather of Rabbi Paul Citrin
 Charles Pass, father of Willie Pass
 Manas Rosenberg, grandfather of Joshua Rosenberg

In order to ensure that the name of your loved one will be recited at a Friday night Shabbat service, we have instituted the following practices:

- The Hebrew dates for each week's yartseyt are listed in each Newsletter.
- Hebrew vs. conventional calendar: The temple's tradition is to base the yartseyt list on the Hebrew calendar. Those who wish to have a name read on a Friday night close to the non-Hebrew calendar date are asked to please email or call Stefani Singer a few days prior to the service.

Asterisks at left indicate that a loved one has been permanently memorialized with a plaque in the Temple sanctuary. If you are interested in acquiring a plaque for your loved one, contact Stefani Singer at the Temple.

Read on October 23 Tishrei 30—Heshvan 6

Perry Kohn, friend of Michael Mandel
 *Meyer Davison
 Melvin Taylor, Sr, father of Mel Taylor
 Frances Sohn, sister of Martha Wainger
 Abe Kurgans, father of Buzzie Lieberman
 *Tillie Frank
 Edith Madenberg, mother of Janet Stevens
 Marion Feinberg, mother of Martha Wainger

Read on October 30 Heshvan 7—13

Susan Bronstein, wife of Ron Bronstein,
 mother of Jamie Bronstein, grand-
 mother of Evan Zigmond
 *Darlene Taylor, wife of Mel Taylor
 *Harold Brown, father of Jeff Brown
 *Nathan Edelstein, grandfather of Dee Cook
 Arieh White, mother of Mike White
 *Benjamin Galatzan
 *Israeli Prime Minister Yitzhak Rabin
 *Olga Szucs
 Sam Matlin, father of Estelle Berger
 Agnes Youngs, mother of Win Jacobs



A Letter from the Sisterhood President (continued from p. 4)

The Sisterhood Executive and the Sisterhood Board are planning to bring many programs to the women of Temple Beth-El over the course of the 2009-2010 year. We encourage you to join with us as we celebrate the fact that we are the women of Temple Beth-El.

We want and need the support of **all** the women of Temple Beth-El. Whether you're a mother, sister, daughter, aunt, single or married, widowed, with or without children, an empty nester, born Jewish, a Jew by choice, a non-Jew married to someone Jewish, we encourage you to become a member. Join us as a member of a committee, a committee chairwoman. Bring some new ideas or simply partake in our exciting and fun activities –whatever level of involvement you choose –we encourage you to support Sisterhood.

This year we have made an effort to keep our dues to \$30.00 as they have been past years. Your \$30.00 dues payment includes membership in Women of Reform Judaism (WRJ) which serves Jewish and humanitarian causes worldwide and also includes a pledge to Youth, Education, and Special Projects as previously mentioned. In addition your dues assists us to offset some of the costs associated with the Oneg Shabbats, Bar and Bat Mitzvah gifts and other Temple events and projects that all members have access to.

So, look to the Adelante and the new wonderful Temple website for up coming activities and please consider supporting us by becoming a member or simply by making a contribution to your Temple's Sisterhood. We know we will be a better organization with your involvement.

Please send all dues or contributions to Temple Beth-El, attention Susan Michelson, Sisterhood treasurer or simply drop it off at the Temple with Stefani Singer, Temple Administrator. Let us count you as a member of this wonderful group of women.

Terri Sugarman, Sisterhood President

Youth Group Report

By Stefani Singer and Leora Zeitlin

Beth-El Temple Youth welcomes new co-advisors, Jonathan Kolikant and Ben Jacobs. Jonathan is an ex-president and treasurer of BETY from not too many years ago. He is a graduate of Tulane University and is home to get started with his career. Ben, a high school teacher, comes to us most recently from Albuquerque, and is originally from Oklahoma.

Seven BETY members joined Ben and Jonathan at International Delights on Sept. 13 to get acquainted and plan for the year. The group discussed their annual High Holidays Food Drive, the October 22-25th LTI (Leadership Training Institute) NFTY weekend in El Paso, a combined event with Mount Sinai's MSTY group and service to the temple. Look for more BETY news as the year unfolds.

Welcome, welcome, Ben and Jonathan!!

Adam and Alec Train, and Joshua Sarabia, travelled with Stefani Singer to the NFTY Fall Kallah during the last weekend of August. The event included singing and workshops and games and discussion groups and services in the most beautiful mountain camp setting of Camp Charles Pearlstein, above the Prescott Valley, about 2 hours north of Phoenix. There was great food and even greater spirits. NFTY is a tremendous opportunity for our small youth contingent to reach out and connect with Jewish teens from throughout the Southwestern Region of the US. And, later this year, NFTY expands to the entire country with BIENNIAL in Toronto and a West Coast Party weekend combining youth from all over the Western U.S. at Camp Newman-SWIG in California in mid-January.

If you are interested in knowing more about the 2009-2010 NFTY schedule, or have questions regarding youth group, contact Ben Jacobs bajaco@hotmail.com or Jonathan Kolikant jko-likant@gmail.com.



Religious School News

Shalom and Chag Sameach! This October we are celebrating *Sukkot* and *Simchat Torah*. Our religious school for the year 5770 is almost as large as last year's school with an enrollment of twenty-three students. In addition to our fine teaching staff, we have young teaching assistants (*madrichim*) from our *Machon* class and they add a lot of extra excitement to our classes. Amalia Zeitlin is working with Judy Hilbert and the Gan class. Estes Weeks is helping Erich Zameret with the Alf/Bet class. Talia Kolikant is supporting Leora Zeitlin's class. Please check out some pictures from our Back-To-School Havdalah Celebration on August 22 at White Sands National Monument.

For the October Religious School calendar, please mark Sunday, October 11 as our second Family Education Day. The theme is to be *Simchat Torah* and it should be an exciting way to celebrate the holiday.

We held our first Family Education Day on September 13 with a focus on *Rosh Hashanah*. In addition, Stuart Kelter led the Training Wheels Program on the same Sunday. We thank Stewart for agreeing to teach our very youngest children. We also encourage our Religious School families to attend Family Shabbat services on the first Friday evening of each month. Please attend our family oriented service on October 2 followed by a Shabbat dinner. Since this is *Erev Sukkot*, we should have a *sukkah* booth erected for this service. So, we may be able to celebrate in the *sukkah*.

As always, you may contact me by phone or email with any comments, questions, concerns, or suggestions regarding our religious school.

William (Bill) Stein, Principal, Temple Beth-El Religious School, 575-373-8027, starman@tblc.org



COPPER RIDGE BUILDERS

Small enough to listen - Big enough to deliver

Dustin Munda
575.621.3030

- ♦ Additions
- ♦ Remodeling
- ♦ Landscaping
- ♦ Custom Building
- ♦ Garage Conversions

- ♦ Bath
- ♦ Kitchens
- ♦ Drywall
- ♦ Windows
- ♦ Plumbing



October Shabbat Schedule

Friday, October 2nd 5:45 P.M.

Shabbat & Erev Sukkot Family Service
Pot Luck Dairy dinner follows in the Sukkah

Saturday, October 3rd

9:00 A.M. Talmud Study
10:15 A.M. Shabbat and First Day Sukkot Service
Bar Mitzvah of Ari Meron Gupta, son of Susannah Skyer Gupta
And Vipin Gupta
Kiddush luncheon follows
Torah: Leviticus 23:33—44; Exodus 12:21-51
Haftarah: Book of Ecclesiastes; Zechariah 14:1—21

Friday, October 9th—Erev Shabbat 7:30 P.M.

Rabbi Citrin will teach

Saturday, October 10th

9:00 A.M. Talmud Study
10:15 A.M. Shabbat, Shemini Atzeret and Yizkor
7:00 P.M. Erev Simchat Torah Celebration
Torah: Deuteronomy 14:22—16:17
Haftarah: I Kings 8:54—66

Friday, October 16th 5:45 P.M.

Kabbalat Shabbat

Saturday, October 17th

9:00 A.M. Talmud Study
10:15 A.M. Service
Kiddush luncheon
Torah: Parashat Breishit Genesis 1:1—6:8
Haftarah: I Samuel 20:18—42

Friday, October 23rd—Erev Shabbat 7:30 P.M.



SONOMA RANCH

David M. Steinborn
Construction & Development
Sonoma Ranch Golf
Sunset Grill
141 Roadrunner Parkway
Suite 224
Las Cruces, NM 88011

575.521.0770 (office)
575.644.3136 (cell)

david@sonomaranch.com

October Shabbat Schedule *(continued from p.13)*

Saturday, October 24th

9:00 A.M. Talmud Study
 10:15 A.M. Service
 Kiddush luncheon
 Torah: Parashat Noach Genesis
 6:9—11:32
 Haftarah: Isaiah 54:1—55:5

Friday, October 30th—Erev Shabbat 7:30 P.M.

Rabbi Citrin will teach

Saturday, October 31st

9:00 A.M. Talmud Study
 10:15 A.M. Service
 Torah: Parashat Lech Lecha
 Genesis 12:1—17:27
 Haftarah: Isaiah 40:27—
 41:16

Calling All Historians

The TBE History Committee is looking for a few volunteers to serve as members of the History Committee. If you are interested please contact Jeff Brown and Frances Williams. If you have questions, contact Jeff, Frances or Jay Spetalnick at:

Jeff - jbrown@nmsu.edu ; Frances - ffw@lascrucos.com,
 Jay - rspetalnick@q.com .

A Word of Thanks

From Al and Sherry Woods: Thank you ALL so much for your prayers and visits and well wishes in Sherry's time of need. All of you were so supportive with your notes and calls and gifts over the last several weeks. We can't thank you enough.

Please join us in celebration
 and worship
 as our son,
 Ariel Meron,
 is called to the Torah as a Bar Mitzvah

Saturday, October 3, 2009
 Shabbat and the first morning
 of Sukkot
 15 Tishrei 5770

Ten fifteen in the morning

Temple Beth-El

Dairy kiddush luncheon follows the
 service.

Vipin Gupta and Susannah Skyer-
 Gupta



455 N. Valley Dr. Suite #3 L.L.C.
 Donuts Cookies Cakes Pies
 Breads Bolillos Mexican Pastries
 & Sugar Free Products (575)
 Challahs by special order 647-5800
 Ramon O. (Ray) & Eugenia M. (Gina) Ortega 312-2500
 Owners

Congratulations to the Hyman family, on the birth of Evan Jules (Yochanon Aviv) Hyman, born 9/11/09 at 1:58pm, weight 9lbs 2oz, 21 inches long.
 “Excellent name!”—Ed.



Donations and Tributes

Temple Relief Fund

Amount Raised to Date: \$7,094

From Mark and Sharon Steinborn, in memory of Min Spetalnick, mother of Jay Spetalnick and Mazel Tov to Jay and Roni Spetalnick on 31 years of marriage!

Library Fund

From Linda and Chuck Kruger, in honor of the Bar Mitzvah of Ford Parkes-Perret, in memory of Rita Hilbert, mother of Harvey Hilbert, in honor of Allen Palanker's recovery, wishing a speedy recovery to Richard Kruger

From Lea Weiselman, in honor of the Bat Mitzvah of Frances Williams, for the Chair Fund

From Andy Frank, in memory of Ben Ecker, father of Cece Frank

From Bernie and Buzzie Lieberman, in memory of Fredda Lieberman and Abe Kurgans and Mazel Tov to Ari Gupta on your Bar Mitzvah

From Clark Williams, for the chair fund, in honor of his grandmother Frances Williams's bat mitzvah

From David and Lynn Zeemont, in memory of Jesse Schindler and Beth Lawrence

Capital Campaign Fund 2004

From Sharon Marbry, in memory of Alma Wagner

From Teddy Weinglass, in memory of Shari Kandell

From Abe Pomerantz, in memory of Samuel Pomerantz, father of Abe

From Irv and Nina Rothman, in honor of Linda Tirk

General Fund

From Grace Hammesfahr, in honor of Nina and Irv Rothman

From an anonymous donor for the Membership Committee's joining of Temple Beth-El with the Las Cruces Chamber of Commerce

From Sally Alkon, thanks to Judy Hilbert and Susan Quinn for the wonderful Sisterhood Tea

From Gary and Alison Mann, IMO Samuel Smalley, father of Alison Smalley Mann

From Ivy White

Religious School Batkin Fund

From Susan Michelson and Bill Stein, continued prayers for a speedy recovery for Sherry Woods and June Jenkins

Rabbi Discretionary Fund

From Stephanie and Elon Boms

From Mark and Sharon Steinborn, wishing a speedy recovery to June Jenkins

From the Treasurer

Donations are gratefully accepted for the following:

General Operating Fund

for the Temple's day-to-day operation

Fund 2004

for upkeep and mortgage on our new building

Community Service Fund

for various projects that benefit both our community and Las Cruces/Southern New Mexico

Send a Kid to Israel Program (S.K.I.P. Fund)

to send Temple youth to Israel

Irving Batkin Memorial Scholarship Fund

to provide a Jewish education for our children: earnings from this fund are used mainly to offset the cost of operating our Religious School

Frances Williams Library Fund

To provide books and infrastructure for the Temple library.

Rabbi's Discretionary Fund

Periodically, the temple may list other short-term projects or needs. Contributions that do not specify a project or fund will be added to the General Operating Fund. If you have a question or wish to contribute for a project not listed here, please contact Treasurer Paul Feil.

Rabbi Discretionary Fund

In appreciation to Rabbi Citrin for his presence and support as we dedicated the headstone for our mother, Minnie Spetalnick on September 6, 2009, in Palm Desert, California, by her children Cindy, Noel, Jane, Ralph, Chloe, Sam, Roni and Jay Spetalnick.

From Jay and Roni Spetalnick, wishing a speedy recovery to Barney Sugarman and Sherry Woods

From Susan Michelson and Bill Stein, well wishes to Barney Sugarman and Bernie Lieberman

In honor of the dedication of the headstone for Minnie Spetalnick (mother of Jay) on September 6, 2009, in Palm Desert, California, by Jay and Roni Spetalnick.

From Jay and Kate Parnes



ONGOING EVENTS

TEMPLE BREAKFAST—Weekly breakfast meetings and discussions of Jewish interest will be held at the Temple at 9AM on Wednesdays, with bagels and coffee provided.

MENSCH CLUB—“Discovering Judaism Through Film” is a year-round, once-monthly film series for all Temple Beth-El members and their guests sponsored by the Temple Beth-El Mensch Club. Films pertaining to a wide range of Jewish-related topics are shown on the third Tuesday of each month at 7:30PM at the Temple. The movies are free, but donations for sodas and snacks are welcome. Anyone with a film they wish to share with the community are encouraged to contact Phil Alkon, Mensch Club Film Chair, at 524-6945 or palkon@aol.com. Regular Mensch Club meetings are held on the first Tuesday of each month at 7PM at the Temple. For additional Club information, please contact Ford Parkes-Perret, Mensch Club President, at 373-0334 or Fordparkesperret@comcast.net.

TALMUD STUDY—Talmud study meets every Saturday in the Social Hall before the new Saturday morning services. Prospective students are welcome and may contact Erich Zameret or Tana Hemingway for more information.

OCTOBER

OCTOBER 3: SAVE THE DATE—Ari Gupta’s Bar Mitzvah and Kiddush luncheon will be conducted. Come and celebrate!

OCTOBER 6: MENSCH CLUB—Professor Emeritus Walt Whitford will speak on “How Plants and Animals Survive in the Desert.” Professor Whitford’s area of specialty is desert ecology. In addition to having spent seven years in Israel’s Negev Desert, he also has done research in the Judaeen desert, Chile, Australia and South Africa.

OCTOBER 16: EMPTY BOWLS—Empty Bowls, the annual fundraiser for El Caldito Soup Kitchen will be held Friday, October 16, 11AM - 1:30PM at St. Paul's United Methodist Church, corner of Griggs and Alameda Streets. Tickets are \$13.00 in advance and \$15.00 at the door.

Advance tickets may be purchased at Unravel Yarn Shop and Gallery on the Downtown Mall, Glenn Cutter Gallery on El Paseo and University, Mountain View Market, Spirit Winds, Hair & Body Shop in Mesilla, The Potteries, Rising Sky Artworks, Enchanted Gardens and Boudreau Glenn Cutter Jewellery. You may also purchase advance tickets from El Caldito Soup Kitchen volunteers. If you have questions about the event, ask any Soup Kitchen volunteer or call Yolanda at the Soup Kitchen, 525-3831.

SAVE THE DATE

NOVEMBER 14: PANEL DISCUSSION ON ALTERNATIVE ENERGY—A panel on energy will be held at the Temple at 12:45PM. See p. 8 for more details.

Thanks from Gabriel Lampert

Mark Steinborn sent me a note telling me that the Temple has put a leaf in my honor on the Tree of Life. I am really touched by this gesture, and do appreciate it. I am getting connected here, but still think often of Las Cruces and Temple Beth-El. I hope you are having a wonderful year.

Kol Tuv,

Gabriel

TEMPLE BETH-EL, LAS CRUCES, NEW MEXICO

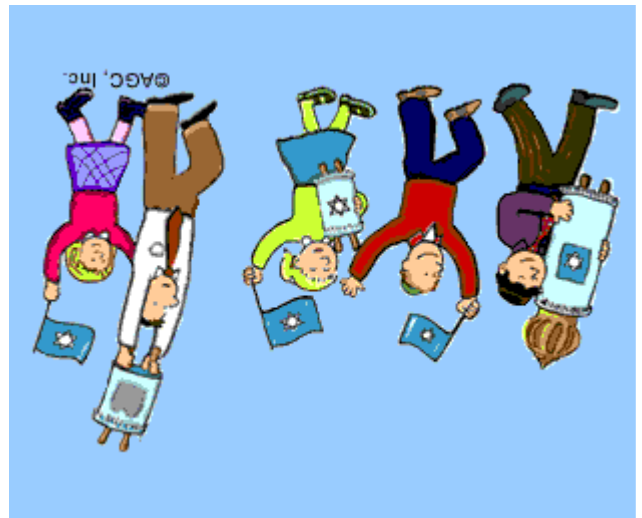
3980 Sonoma Springs Ave
Las Cruces, NM 88011

Phone: 575.524.3380
Fax: 575.521.8111
President Mark Steinborn
admin@tbelc.org

The Temple Beth-El Newsletter is produced regularly at Las Cruces, New Mexico. Editor: Jamie Bronstein. Copy Editors: James Rosenthal and Rabbi Kane. Circulation: Stefani Singer. We welcome contributions by, about, or for temple members. Contributions can be mailed to the temple or emailed to nmbethelnewsletter@yahoo.com. We reserve the right to edit all contributions and advertisements. We do not return contributions to authors unless sent with a self-addressed prepaid envelope. Non-member subscriptions are \$25/year. Advertising: 2x3 (business card): \$120/yearly. Quarter page: \$220/yearly. Half page: \$450 yearly. For information about ads or insertions please contact the editor.
Return Service Requested

**TEMPLE BETH-
EL IS ON THE
WEB !
WWW.TBELC.ORG**

October 2009



Temple Beth-El
3980 Sonoma Springs Ave
Las Cruces, NM 88011

NONPROFIT ORG.
U.S. POSTAGE PAID
LAS CRUCES, NM
PERMIT NO. 537